

LTECH 2CH Multi-control Switch Panel

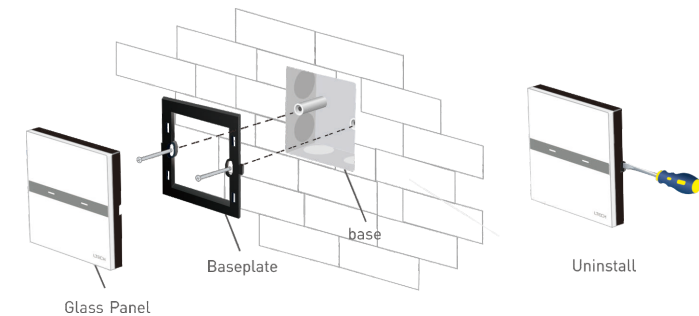


Technical Specs:

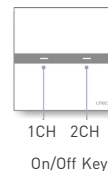
K2RF 2CH Multi-control Switch Panel		VK Remote	
Wireless Frequency:	433MHz	Remote Option	4 zones control
Input Voltage:	200~240Vac, 50Hz	Working Voltage:	3Vdc (battery CR2032)
Max Load Power:	500W/CH	Wireless Frequency:	433MHz
Min Load Power:	5W/CH	Working Temp.:	-30°C~55°C
Working Temp.:	-30°C~55°C	Package Size:	L113xW46xH18(mm)
Package Size:	L113xW112xH50(mm)	Weight(G.W.):	85g
Weight(G.W.):	230g		

* Load Type: LED lamps / Incandescent lamps / Fluorescent lamps / Energy-saving lamps

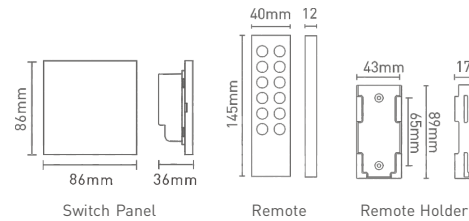
Installation Instruction:



Function:

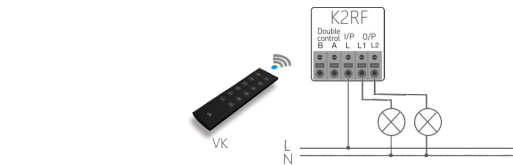


Product Size:

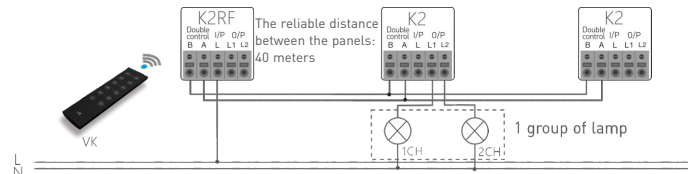


Wiring Diagram

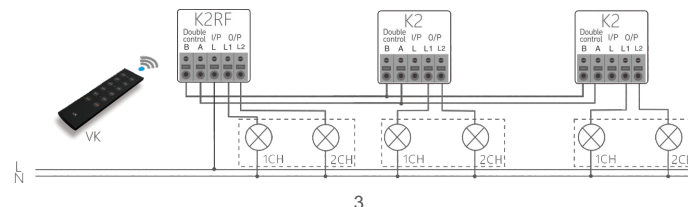
Single K2RF switch panel connect to lamps.



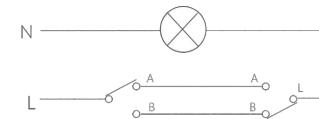
K2RF together with K2 panel, realize multiple panels controlling 1 group of lamp.



K2RF together with K2 panel, realize multiple panels controlling multiple groups of lamps.



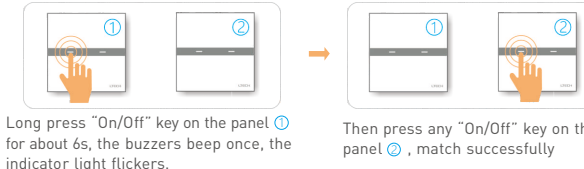
Replace the double-control switch of traditional family.



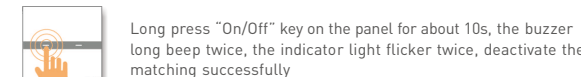
Introduction of multi-control switch panel:

Multi-control switch panel with double control function only when they have been matched, please turn on the lamp if you do the following steps.

Match code:



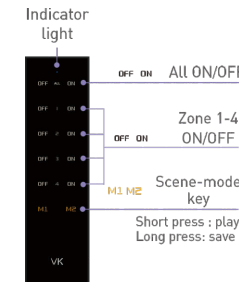
Clear code:



Attention:

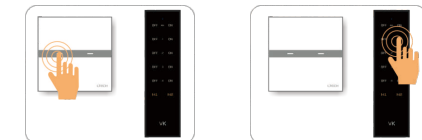
1. Live line can be wired to any panel if 2 or 3 multi-control switch panel work together.
2. the lamps can be connected to any switch panel.
3. Please make sure that A connected with A, B with B for multi-control wiring.
4. Multi-control switch panel works only when they have been matched.

Operating Instruction for Remote:



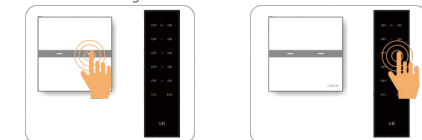
Match code between the remote and the receiver
* please turn on the lamp if you do the following steps.

Match code:



1. Press 1CH "On/Off" key on the switch panel for about 6s, the buzzer beeps once, the indicator light flickers.

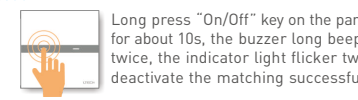
2. Then press the matching zone key on the remote, 1CH match successfully.



3. Press 2CH "On/Off" key on the switch panel for about 6s, the buzzer beeps once, the indicator light flickers

4. Then press the matching zone key on the remote, 2CH match successfully.

Clear code:



Attn: One panel can be matched with max 10 remotes.